



GULFSTREAM COMMUNITY PARTNERSHIP SCHOOL



Gulfstream Early Learning Center and Gulfstream Academy are two public, non-charter schools established in 2016

Gulfstream Academy K-8 Students



1,366 K-8 students

89.6% receive free and reduced lunch

41.1% are identified as English Learners

15.5% have been identified with special learning needs

Gulfstream Early Learning Center Students (0-5)



118 pre-K students

100% receive free and reduced lunch

47.2% are identified as English Learners

7.6% have been identified with special learning needs



Note: Percentages used in this slide is from Gulfstream's 2020 Needs Assessment Report Findings

In 2019, 6 partners joined together in establishing a Community Partnership School at Gulfstream Academy



The Community Partnership School (CPS) model **has four model components**. A “Community school” is a term used to **define an approach used to improve the success of students, families and a community** through collaborations between a school and a community partner(s).



Note: The graphic was created by the UCF Center for Community Schools and is taken from their presentation “An Orientation to Planning”



The core partners represent various organizations— Gulfstream has six core partners



University or
College



School
District



Nonprofit



Healthcare
Provider



The CPS model is supported by four pillars that contribute to the success and sustainability of the model



Gulfstream Academy, with the support from core partners, **will implement several processes, programs and services on campus aligned to the pillars.**

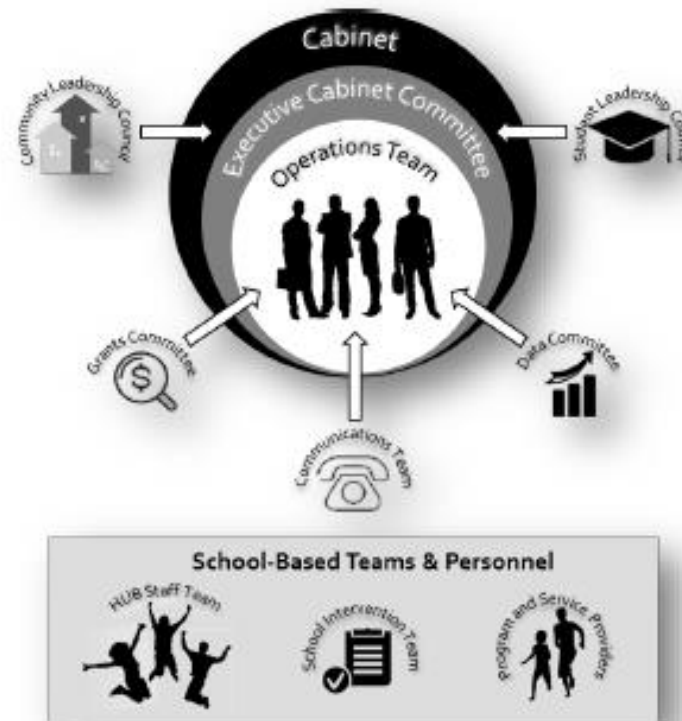


Note: The graphic was created by the UCF Center for Community Schools and is taken from their presentation "An Orientation to Planning"



Pillar 1: Collaborative Leadership

A culture of **shared governance** and **collective decision-making** toward a unified vision to identify needs and provide resources in the school and community.



Note: The graphic was created by the UCF Center for Community Schools and is taken from their presentation "An Orientation to Planning"



Pillar 2: Expanded Learning

Academic support and enrichment that takes place before and after school, during weekends and summer, to **augment traditional learning during the school day** such as tutoring, mentorship programs, leadership opportunities, etc.



Note: The graphic was created by the UCF Center for Community Schools and is taken from their presentation "An Orientation to Planning"



Pillar 3: Wellness Supports

Access to a range of **health and social services** that are provided **on the school's campus** such as dental treatment, medical services, vision care, behavioral health counseling and health insurance access.



Note: The graphic was created by the UCF Center for Community Schools and is taken from their presentation "An Orientation to Planning"



Pillar 4: Family and Community Engagement

Bringing families and the community into the school as partners in student's success **AND** making the school a **neighborhood center** that provides adult enrichment opportunities. Examples of services and programs under this pillar are a parent resource center, clothes and food pantry, etc.



Note: The graphic was created by the UCF Center for Community Schools and is taken from their presentation "An Orientation to Planning"



The goal is for Gulfstream Academy to be certified by UCF as a Community Partnership School by year 5

← Implementation Phase →

2019-20	2020-21	2021-22	2022-23	2023-24	2024-25	2025-26
Planning Period	Hybrid Planning	Implementation Year 1	Implementation Year 2	Implementation Year 3	Implementation Year 4	Implementation Year 5
<i>Submit Planning Registration form to join certification track</i>	<i>Begins July 1 after CPS director is hired</i>	<i>Begin implementation</i>	<i>Submit Intent-to-Certify form and schedule certification review</i>	<i>Prepare for and complete Certification Readiness Assessment</i>	<i>Continue implementation</i>	<i>Prepare for and complete Certification Assessment</i>



A UCF-CERTIFIED

COMMUNITY PARTNERSHIP SCHOOL

CENTER FOR COMMUNITY SCHOOLS



To be certified as a community partnership school, Gulfstream Academy has to follow and meet 12 standards

Standard 1 – Partnership

Standard 2 – Collaborative Leadership, Governance and structure

Standard 3 – Foundational Principles

Standard 4 – Staffing

Standard 5 – Integrated Community Partnership School Framework

Standard 6 – Expanded Learning Opportunities

Standard 7 – Comprehensive Learning Supports

Standard 8 – Family and Community Engagement

Standard 9 – Volunteering

Standard 10 – University/College Assistance

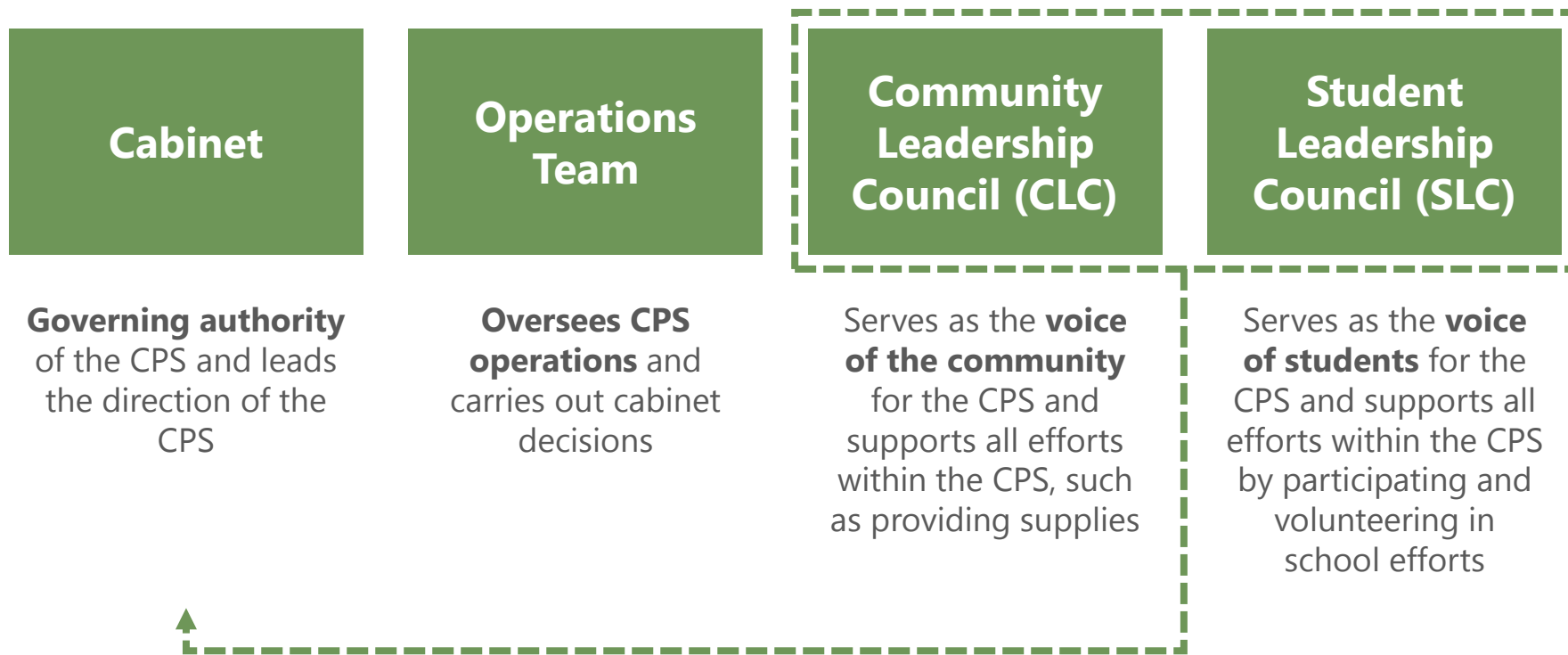
Standard 11 – Evaluation

Standard 12 – Sustainability



There are four governance and operating groups essential to the Community Partnership School (CPS) model

Standard 2 – Collaborative Leadership, Governance and structure



In the future, a CLC member (representing the voice of the community) and a student or parent on the SLC (representing students' voice) would sit on the cabinet



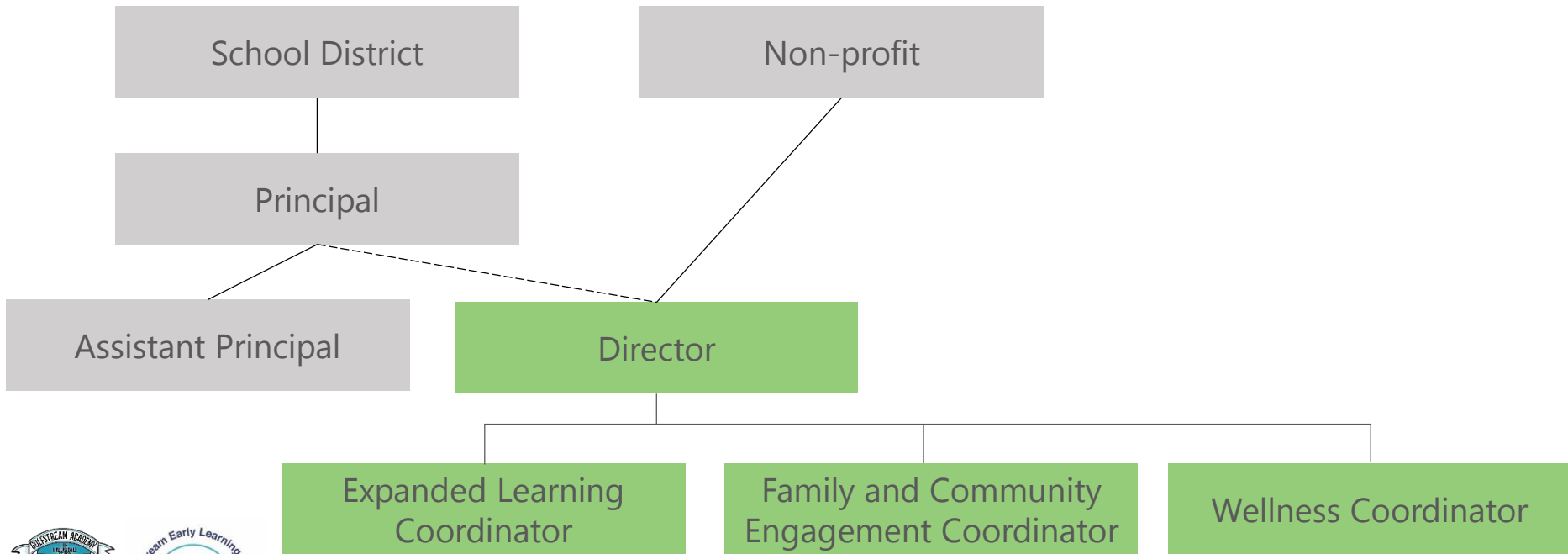
Aside from the cabinet, there is an operations team that helps to operationalize the model and is aligned to the four pillars



Note: The graphic was created by the UCF Center for Community Schools and is taken from their presentation "An Orientation to Planning"



The operations team is made up of four core staff positions



The Community Partnership School model is having a direct impact on 1,400+ students and their families

A few 2021-2022 Goals

1

Increase tutoring, mentoring, extracurricular, and wellness supports correlated with increasing school attendance

2

Establish the student and community leadership councils

3

Complete an interagency data sharing agreement between core partners for effective data-based strategic planning

