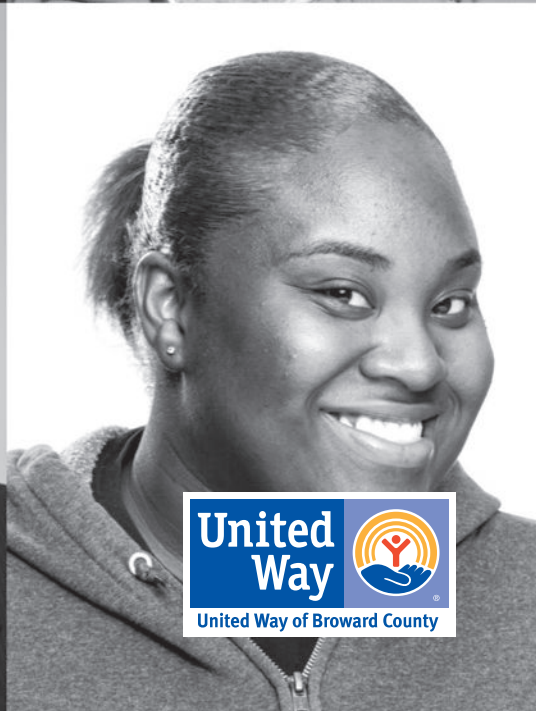
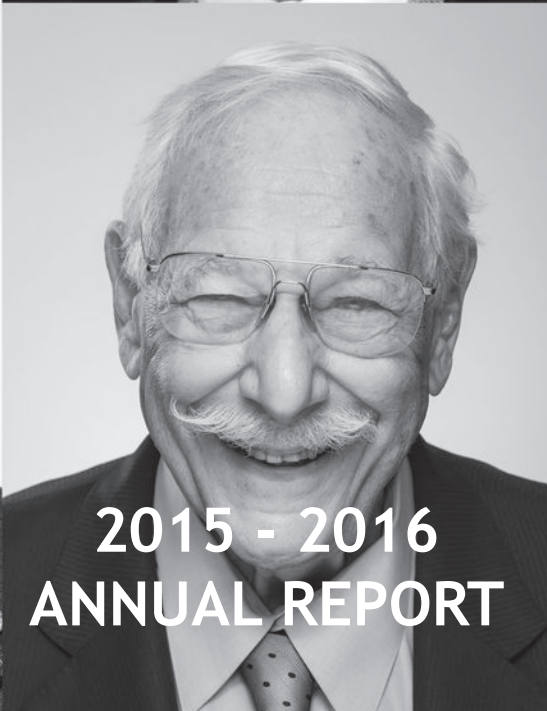
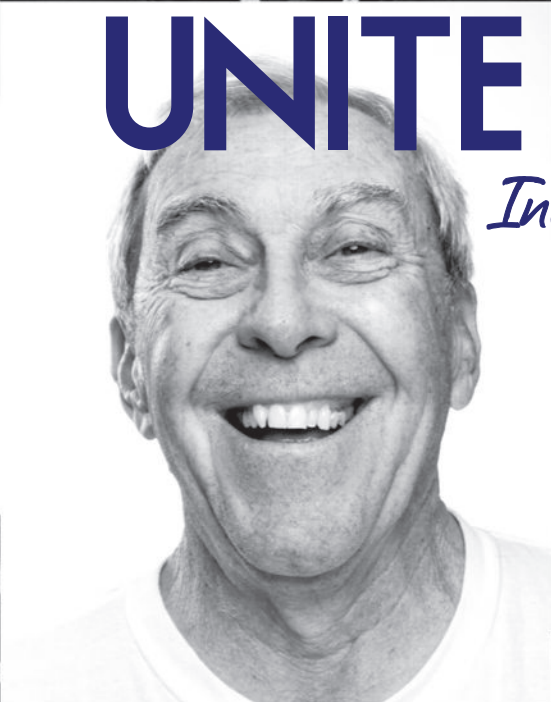




UNITE BROWARD

Invest in change that lasts



2015 - 2016
ANNUAL REPORT



OVERVIEW



United Way of Broward County is an architect of solutions for challenges faced by many people in our community. The goal is to help people reach their fullest potential through a quality education, give families the support they need to earn, keep and grow assets, and educate individuals how to make smart decisions about their health.

United Way, along with community volunteers who are experts in their fields identify specific unmet needs, and then seek partners and funds to develop programs delivering measurable results. Through a collaborative approach, the best people, ideas, talents and resources are brought together to tackle complex challenges head on and create long-lasting positive changes in Broward County.

MISSION

To focus and unite our entire community to create significant lasting change in the impact areas of Education, Income and Health – the building blocks for a better life – which positively impacts people's lives.

VISION

United Way of Broward County will be the catalyst for change and convener of partnerships that unite hearts, minds and resources within our community.

COMMUNITY IMPACT



YOUTH SUCCESS

Helping children and youth achieve their greatest potential through early learning and leadership programs

**Youth and families served by
18 programs with a total funding
of more than \$950,000.**

Achievements of the youth touched by United Way of Broward County funded programs and initiatives.

- Approximately 300 children in the child welfare system were screened for developmental delays. Of those children, 38 percent were referred for additional services.
- 95 percent of young children improved their ability to be school ready

YOUTH SUCCESS

- Over 75 percent of youth in our education programs increased their protective factors (self-confidence, self-esteem, self-efficacy, competencies) and decreased their risk factors (poor behaviors, substance use).
- More than 55 percent of school aged children increased their knowledge, skills, and ability to succeed in school
- Functioning and life skills were increased in 52 percent of youth
- Nearly 45 percent of children 0-5 maintained or improved their social/emotional and communication stages of child development
- Academic attitude was increased in 54 percent of school children.
- Level of functioning in was increased in 97 percent of families

READINGPALS

ReadingPals is an early literacy initiative for children kindergarten through third grade. The program focuses on ensuring these children have been exposed to the wonders of literature and are reading at grade level at the end of third grade. United Way of Broward County engages, trains and deploys volunteer “reading pals” in our community. These volunteers dedicate an hour a week for 25 weeks to read in individual or small group settings. ReadingPals also provides the children with books so they can start a home library.



Achievements:

- Children with a “reading pal” increased their scores significantly in print knowledge, phonological awareness, math and oral language.
- ReadingPals volunteers contributed more than 5,600 hours impacting more than 330 students.
- The number of schools with a ReadingPals program grew to 21
- More than 8,500 books were distributed to ReadingPals children.

Partners: The Children's Movement of Florida, Broward County Public Schools, Children's Services Council of Broward, City of Fort Lauderdale, A.D. Henderson, PNC Bank and Carol and Barney Barnett



COMMUNITY IMPACT

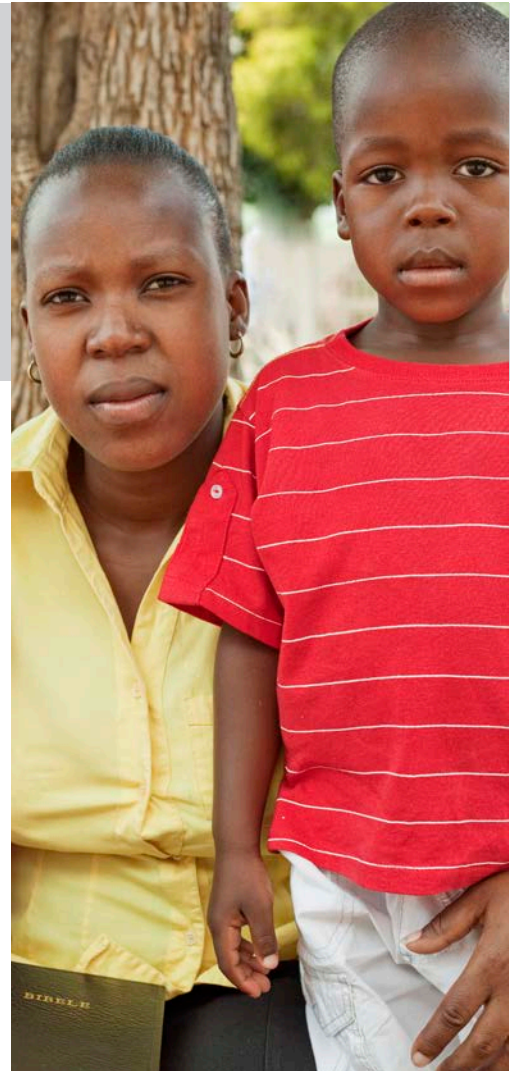
FINANCIAL STABILITY

Empowering people to earn, keep and grow assets

**Clients and families served through
13 programs and 2
initiatives with a total
funding of \$785,000.**

**Achievements of the clients and families
assisted by United Way of Broward County
funded programs and initiatives**

- More than 60 percent of women in substance abuse treatment were able to obtain a GED, high school diploma, certification, or high education degree
- Legal relief was provided to 88 percent of people whose home was in foreclosure
- Nearly 100 percent of participants were screened for public benefits
- Individuals (25 percent) were able to demonstrate some level of financial stability
- Income supports (earned income tax credit, health insurance, etc.) were accessible to 68 percent of participants.
- More than 30 percent of participants increased their level of self sufficiency



IMPROVING PEOPLE'S HEALTH

Ensuring people have the opportunity to achieve optimal health

**Clients and families served by
14 programs with a total
funding of more than
\$1,390,000.**

Achievements of the clients and families supported by United Way of Broward County Health funded programs

- Healthcare coverage was obtained, preserved, or increased by 71 percent of individuals or families served.
- Medical services were linked and accessed by 61 percent of individuals or families.
- More than 60 percent of LGBTQ youth increased their protective factors and decreased risk
- LGBTQ youth (78.5 percent) increased their confidence to serve as HIV/AIDS/STI peer educators in their school
- Knowledge was increased by 64 percent of youth participants regarding the risk of HIV/AIDS/STI
- Nearly 60 percent of participating adults increased their knowledge regarding the risk of HIV/AIDS/STI
- Participating youth (94.6 percent) have increased their knowledge regarding cancer types and risks
- Healthy eating was increased by 85.7 percent of special needs adults



COMMUNITY IMPACT

MISSION UNITED

Assisting Broward's Veterans as they re-acclimate to civilian life

Since its inception more than 4,000 veterans and their families have been served through MISSION UNITED with a total funding of \$500,000.

MISSION UNITED is a critical program supporting US military service members, veterans and their families in Broward County by helping them re-acclimate to civilian life. Key focus areas include employment, education, health, legal assistance, emergency financial aid, and housing.

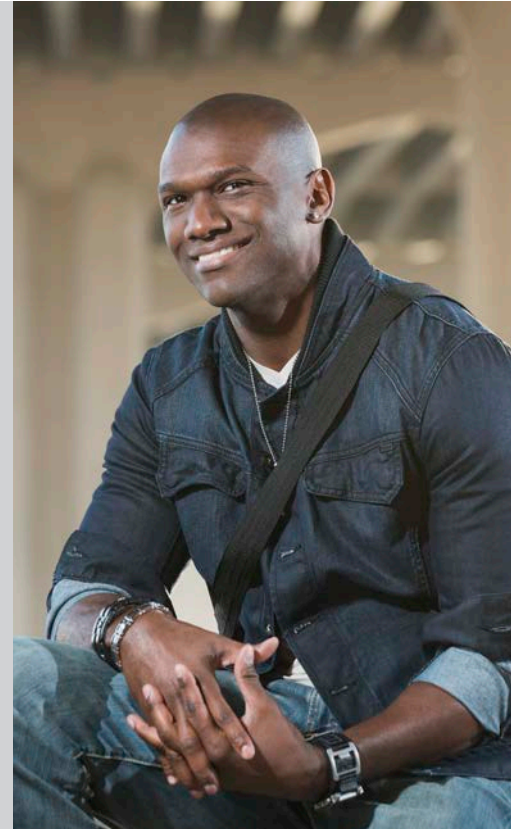


Through MISSION UNITED, United Way of Broward County aligns existing services and creates solutions where there are gaps in support.

2015 - 2016 ACHIEVEMENTS:

- MISSION UNITED has assisted more than 1,200 clients with one on one case management
- Free legal services have been provided to more than 1,580 clients
- More than 100 mentors have been trained and many mentor/mentee pairs have been connected
- More than 280 veterans received behavioral health services
- MISSION UNITED assisted nearly 350 veterans and their spouses with career resources including resume critique, interview skills training, and referrals to employment opportunities
- More than 590 households were served through a SSVF Homeless prevention grant received by United Way of Broward County

Partners: JM Family Enterprises, Inc., Roy and Kathryn Krause, Chase, Nova Southeastern University, Comcast and Sun-Sentinel



SUBSTANCE ABUSE PREVENTION

Helping children, youth and families to live healthy and drug-free

**More than 22,000 clients and families
were served with a total funding
of more than \$1,880,500.**

United Way of Broward County's Commission on Substance Abuse is the county's broad based substance abuse prevention coalition dedicated to reducing substance use/abuse and all its devastating consequences on individuals, families and communities for more than 25 years.



ACHIEVEMENTS:

- Decrease of 84.5 percent in hospitalizations due to Flakka
- Reduction of 9.4 percent in alcohol use by Broward youth
- Nearly 100 percent of the boys in the Broward Youth Coalition chapter were promoted to the next grade level and with over 80 percent of the chapter participants passed all their classes
- Youth who participated in Life Skills training increased their knowledge related to substance use by 26 percent
- Parents and children exposed to additional substance abuse trainings increased their knowledge and protective factors by an average of 30.4 percent
- An increase in resiliency skills to combat the risk factors in substance use and behavioral health challenges was achieved by 85 percent of youth in the child welfare system who participated in substance use education
- Through Interactive Journaling adult program participants were able to increase their self-esteem levels at 83 percent, 86 percent decreased their risk factors, and 96 percent increased their protective factors



COMMUNITY IMPACT

EMERGENCY NEEDS

Providing emergency food, clothing and shelter

**Clients and families served by
two programs with a
total funding of more than
\$830,000**

ACHIEVEMENTS:

- Supplemental Nutrition Assistance Program screenings were provided to 43 percent
- Of those served, 100 percent had their emergency needs met and were referred to other community services
- Nearly 80 percent were able to access referred services

PROJECT LIFELINE

Project Lifeline is United Way of Broward County's response to the increased demands placed upon agencies and organizations throughout the community due to the economic hardships now facing so many of Broward County's families. Commencing in May 2009, this initiative coordinates the bulk purchases and delivery of nutritious food, including fresh fruits and vegetables, meats, rice, beans, and grains to a network of approximately 25 food banks and feeding programs in Broward County.

- More than 500,000 clients and families received over 1.5 million pounds of nutritious food
- Over 25 food banks engaged in bulk purchasing resulting in cost savings and increased volume of food

Partners: The Jim Moran Foundation, The Watts Foundation and Bi-Lo Holdings Grant



FINANCIAL HIGHLIGHTS

STATEMENT OF FINANCIAL POSITION

JUNE 30, 2016

Current assets	7,419,839
Other assets	3,097,537
Total assets	10,517,376
Liabilities	6,952,742

NET ASSETS

Unrestricted	2,034,688
Temporarily restricted	529,319
Permanently restricted	1,000,627
Total net assets	3,564,634

STATEMENT OF ACTIVITIES

YEAR ENDED JUNE 30, 2016

REVENUE

Gross contributions	11,842,226
Provision for uncollectible	(891,437)
Net contributions	10,950,789

Grants	5,661,232
Other revenue	1,081,976
Investment gain (loss)	(133,240)

TOTAL REVENUE 17,560,758

EXPENSES

Allocations and contracted programs	9,912,870
Designations	2,131,615
Program services	2,855,773
Development	1,292,057
Management and general	911,501

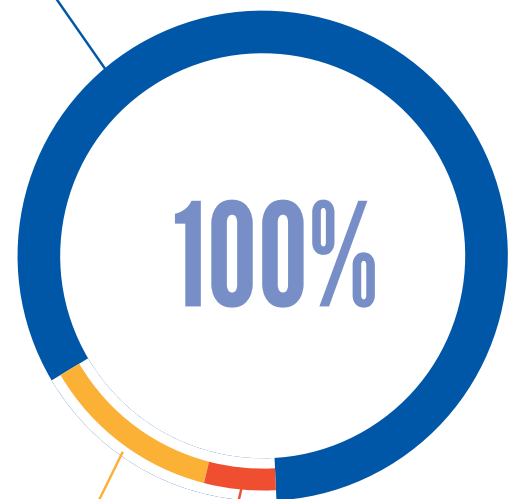
TOTAL EXPENSES 17,103,816

CHANGE IN NET ASSETS 456,942



WHERE YOUR DOLLAR GOES

87% PROGRAMS & INITIATIVES



5% ADMINISTRATION

8% DEVELOPMENT & OUTREACH

For complete audited financial statements, visit UnitedWayBroward.org

2015-2016 COMMUNITY PROGRAMS

ARC Broward

Alternative Behavioral Learning Environment
ARC Broward Center for Financial Stability

Archways, Inc.

Substance Abuse Prevention

American Red Cross, Broward County

Emergency Services

Boys & Girls Clubs of Broward County, Inc.

Youth Education Services
Working Families Transportation Program

Broward House

MEGA (Men Educating and Gaining Awareness)

Broward Housing Solutions

Chronic Homelessness Housing

Broward Partnership for the Homeless

Family Services

Broward Regional Health Planning Council

Healthy Families Broward
Healthy KIDS Broward
Subsidized Childcare

Center for Hearing and Communication

Aging with HIV/AIDS/STI's: The new Challenge for Seniors

Center for Independent Living of Broward

Living Well with a Disability

ChildNet, Inc.

Pathways to School Readiness

Children's Diagnostic & Treatment Center, Inc.

Lift a Child to Health

Children's Harbor

Solution Focused Brief Therapy

City of Fort Lauderdale

Chronic Homelessness Housing

Coast to Coast Legal Aid of South Florida, Inc.

Healthcare Access Project

Community-Based Connections, Inc.

Sunland Park – Early Achievers

Community Foundation of Broward

Leadership Institute/Non-Profit Resource Center

Covenant House Florida, Inc.

ACCESS: Healthcare Services for Homeless Teens
Under 21, their Babies and Children

Crockett Foundation, Inc.

iHealth 4 Teens

Family Central, Inc.

Home Instruction for Parents of Preschool Youngsters

Firewall Ministries, Inc.

T.H.I.N.K. Leadership Middle School Program

First Call for Help of Broward, Inc.

2-1-1 Helpline Services
MISSION UNITED Helpline

The FLITE Center

One Stop Resource Center

Florida Department of Health in Broward County

KidCare

Gilda's Club South Florida

Kids CAN: Cancer Awareness Now

Hanley Center Foundation, Inc.

Promoting Positive Health and Personal Development
Provider Prevention Partnership Grant

HandsOn Broward

Emergency Preparedness and Recovery Initiative

Healthy Mothers-Healthy Babies Coalition

Emergency Basic Needs Assistance

Helping Abused Neglected Disadvantaged Youth

LIFE Program

Henderson Behavioral Health, Inc.

HIV Testing, Education & Counseling Program
MISSION UNITED Mental Health Counseling

Hispanic Unity of Florida, Inc.

Center for Working Families
Te Ayudo
VITA (Volunteer Income Tax Assistance)

Hope South Florida, Inc.

Faith in Action Community Housing
The Shepherd's Way Family Shelter

Impact Broward, Inc.

Foster Grandparent Program

Institute for Child & Family Health

Substance Abuse Prevention Program

Jack & Jill Children's Center

Family Strengthening Program
Early Childhood Program

Jewish Family Service, Inc. of Broward County

Emergency Assistance/Homelessness Prevention

Joe DiMaggio Children's Hospital Foundation, Inc.

Be Responsible

Junior Achievement of South Florida

JA World

Kids In Distress

Read With Me! At KID Aftercare

Legal Aid Service of Broward County, Inc.

TANF/LIFT Sanctions Project
MISSION UNITED Veteran's Pro Bono Legal Services

Lighthouse of Broward County, Inc.

Keys to Independence

Luz Del Mundo (Light of the World Clinic), Inc.

HEALTH (Helping Everyone Achieve Life Through Health)

Memorial Healthcare System

CARES (Community Access to Resources, Education and Support)

Museum of Discovery & Science

STEM Center for Education and Career Development APP-titude

Nova Southeastern University, Inc.

OIF/OEF Military Outreach
MISSION UNITED/NSU Center for Veteran's Assistance

Salvation Army – Broward County

New Beginnings for Homeless Pregnant Women
Plymouth Colony Family Transitional Program

Second Chance Society, Inc.

Hand Up Program

SunServe/Sunshine Social Services, Inc.

LGBTQ Youth and Young Adult Total Wellness Program

Susan B. Anthony Center, Inc.

The REAP Program (Readiness for Employment and Placement)

TaskForce Fore Ending Homelessness, Inc.

Homeless Outreach

Urban League of Broward County, Inc.

Center for Working Families
Individual Development Accounts

YMCA of Broward County, Florida, Inc.

Y Teen Leaders

FY 2016/17 (46 Agencies with 51 programs, 3 initiatives, and 1 partnership)
2 Grant Driven Initiatives: Project Lifeline & ReadingPals

YEAR IN REVIEW 2016

READINGPALS

1 ReadingPals volunteer Carin Porras receives thank you flowers from her student Erika Martinez.

2 Jack & Jill Children's Center students Erika Martinez, Alfonso Dansey and Neveah David celebrate the end of another successful school year of ReadingPals.



ROCK UNITED

1 Following their Rock United debut, Shutts & Bowen's band LLP proudly displays their runner-up trophy.

2 John and Lynn Offerdahl (center) join Connie and Steve Finley just moments before the show began.

ENVISION UNITED

1 Envision United's Leadership Team attend a real estate networking event hosted by the Founding Forty members.

2 Envision United members Rosy Lopez and Jonathan Wolfe hand out turkeys to veterans as part of MISSION UNITED's Operation Turkey Dinner.



YEAR IN REVIEW 2016



TOOLS FOR SCHOOL

1 Teachers Carin Ramirez, Amy Shuck and Adrienne Rashbaum of Lyons Creek Middle School proudly show off their van full of school supplies.

2 Publix Super Markets Regional Director Mike Merideth lends a helping hand distributing supplies.

MAYORS' GALA

1 Mayors' Gala Celebration of Service honorees Master Sgt. Michael Therrien and Major Steven Randerson.

2 Founding MISSION UNITED chair Stephen Moss and his wife Rhoda enjoy the event, which raised more than \$200,000 for MISSION UNITED.

3 Mayors' Gala chair Ramola Motwani celebrates the fruits of her labor with her sons Nitin and Dev and daughter in law Anshu.



HOLMAN AUTOMOTIVE GROUP CAR GIVEAWAY

1 Publix Super Markets employee Carlos Agurcia (center) poses in front of his brand new 2016 MINI Countryman generously donated by the Holman Automotive Group with Kathleen Cannon, Bob Betchel and Mike Melville of Publix Super Markets and Lauderdale MINI's Ken Loiseau.



YEAR IN REVIEW 2016

DAY OF CARING

- 1 Wanda Rosa, Karen Barcz, Diane Richardson and Perpetua Schillingford of Team Micro Typing Systems take a break for a photo while packaging meals
- 2 Florida Panther's mascot Stanley C. Panther lends his services to help the hardworking volunteers.
- 3 More than 700 volunteers packaged 300,456 meals for the hungry in Broward County.



MAGNOLIA LUNCHEON

- 1 CNN on-air personality and Magnolia Luncheon keynote speaker Mel Robbins is joined by honorees Allison Cagnetta and Nina Beauchesne of Memorial Healthcare System.
- 2 Title sponsor Nova Southeastern University's Jacqueline Travisano, Jennifer O'Flannery Anderson and Kristina Lucia join Alice Jackson for a photo prior to the luncheon.
- 3 Magnolia Luncheon co-chairs Jill Horowitz of Lifestyle Media Group and Jacqueline Howe of Shutts & Bowen enjoy the fruits of their labor.



TOCQUEVILLE SOCIETY

1. Tocqueville Society Reception hosts Dot and Keith Cobb join Tocqueville Society Award recipients Wini and Joe Amaturo.

2. Tocqueville Society member Scott Parker of The Parker-Harrigan Group/ UBS Financial Services joins Tocqueville Society Chair Andy Taubman of Kaufman Rossin, keynote speaker John Savercool of UBS Americas, Inc. and Kathleen Cannon at the Tocqueville Society Executive Breakfast.



MISSION UNITED

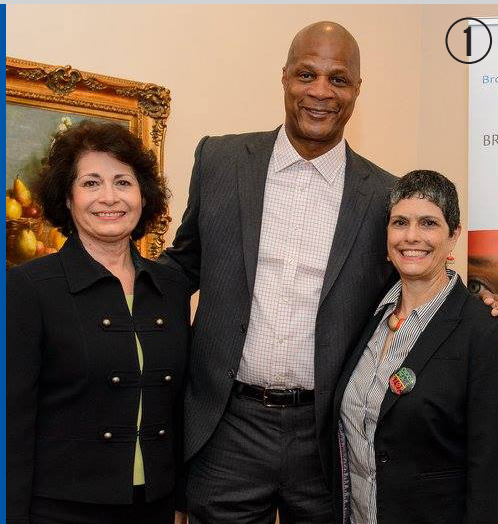
1. Just moments before the ribbon was cut during the official grand opening of the Jean and David Colker Center, dedicated to those who have served.

2. Mia and Emily Clavel proudly show of their new backpacks they received from the annual MISSION UNITED Backpack Giveaway.

COMMISSION ON SUBSTANCE ABUSE

1. Broward County Commissioner Lois Frankel and Sylvia Quintana of the Broward Behavioral Health Coalition spend time with Behavioral Health Conference keynote speaker and former Major League Baseball All-Star Darryl Strawberry before his address.

2. Broward Youth Coalition member Tyrie Fluellen hands out food to the hungry during the program's Alternative Spring Break.



2015-2016 PARTNER RECOGNITION

A special thank you to all the organizations who generously support the community work of United Way of Broward County.

TOP 25 WORKPLACE CAMPAIGNS

1. Publix Super Markets, Inc.
2. JM Family Enterprises, Inc.
3. Memorial Healthcare System
4. Enterprise Holdings South Florida
5. AT&T Florida/CWA Local 3104 & 3120
6. Florida Power & Light Company/IBEW Local 759
7. United Parcel Service/Teamsters Local 769
8. AutoNation
9. Wells Fargo
10. Broward County Government
AFSCME Local 2866 & Federation of Public Employees
11. Macy's
12. Holman Automotive Group
13. School Board of Broward County
Broward Teachers Union & Federation of Public Employees
14. Nova Southeastern University
15. CHG Healthcare Services
16. Broward Health
17. Comcast Cable Communications, Inc.
18. Bank of America
19. Kaplan Higher and Professional Education
20. SunTrust Bank, South Florida
21. Zachry Group
22. Royal Caribbean Cruises Ltd.
23. Holy Cross Hospital
24. Federal Express Corporation
25. Steven Douglas Associates

*As of June, 2016

SPONSORS

Chairman's Circle Sponsors



PUBLIX SUPER MARKETS
CHARITIES



2015-2016 TOCQUEVILLE LEADERS IN GIVING






TOCQUEVILLE SOCIETY STEERING COMMITTEE

Andrew Taubman, Chair,
Kaufman Rossin & Co., P.A.
Allison Cagnetta, Community Advocate
Kathleen Cannon, United Way of Broward County
Carolyn Davis, Community Advocate
Joseph Eppy, The Eppy Group
Brett Frazee, Enterprise Holdings, Inc.
John Heins, Community Advocate
Matt Katz, Katz Barron Squitero Faust
Dara Levan, Community Advocate
W. Scott Parker, Parker-Harrigan Group
Kurt Zimmerman, Zimmerman & Associates

FOUNDING MEMBERS

Robert "Bob" Elmore*
Norma and William* Horvitz
Marti and H. Wayne Huizenga
Millicent and Robert A. Steele*

MILLION DOLLAR ROUNDTABLE MEMBERS

Edmund Ansin
Colin W. Brown 
Robert "Bob" Elmore*
Madelaine and Steve Halmos
Marti and H. Wayne Huizenga
Alice and Mike Jackson
Elaine P. and Jon E. Krupnick
Jan and Jim* Moran 
Alvin Sherman 
The Watts Foundation

ORDRE DE CONNAISSANCE - (\$500,000 - \$999,999)

Jean and David* Colker



ORDRE DE FRATERNITÉ - (\$75,000 - \$99,999)

Kathryn and Roy Krause



ORDRE D'ÉGALITÉ - (\$50,000 - \$74,999)

Bob Birdsong


ORDRE DE LIBERTÉ - (\$25,000 - \$49,999)

Carolyn S. Davis and Ned D. Black 
Fran and Joe Eppy 
Katy and Jon Ferrando
The Gendal Family Charitable Foundation
Dara and Jarett Levan
Una Murphy
Laura and Dick Norwalk
Andrew Lindley Wurtele
Patty Hooley-Zimmerman and
Kurt Zimmerman


ORDRE DE CONSUL - (\$15,000 - \$24,999)

Debbie and Walter Banks
Jeannie and David Clarke
Robert E. Dooley, Esq
Kip Hunter-Epstein and Joey Epstein
Jana and Dr. George L. Hanbury II
John D. Heins 
Carmen and Mark Johnson
Billie Grieb and Duke Lohr
Audrey Millsaps
Wanda and Jim Moran, Jr.
Maureen and Fred Perry
Lori and Steve Sadaka
Lawrence A. Sanders Foundation
Carrie and David Schulman
Holly and Steve Thibault
Phyllis and Alfred Thomas
Lynne Wines 

MEMBERS DE LA SOCIÉTÉ - (\$10,000 - \$14,999)

John E. Abdo
Shannon and Rollie Alfonso
Pam and Angel Alvarez
Winifred J. and Joseph C. Amaturro
Jennifer O'Flannery Anderson, Ph.D. 
and Peter Anderson

TOCQUEVILLE LEADERS IN GIVING 2015-2016

Ron Ansin and Jim Stork
Nancy Bennett
Caren and Peter Berg
Lisa and James Berger
William Berman
Courtney and Ray Berry
Cathy and Kenneth Bierman
Christina and Robert Brinkman
Tammy and Brent Burns
Allison and Andrew Cagnetta
Margaret and Matt Callihan
Elizabeth and Jack Cambareri
Kathleen Cannon
Dot and Keith Cobb
Joan and Brendan Courtney
Keith Costello
Amy and John Daly
Nancy A. and Paul E. Daly
Cathy and James Donnelly
Mr. and Mrs. Herbert Elkins
Laurie and Charles Ermer
Raquel and Chancellor Ray Ferrero, Jr.
Brijin and Brett Frazee
Susan T. and Jesse P. Gaddis
Bonnie and Glenn Gardner
Diane and Angelo Gencarelli, III
Greaton Family Foundation, Inc.
Ellen and Gerald Greenspoon
H.I. Foundation
Judith and C. Kennon Hetlage
Marlee and Zach Hoffman
Jill and Steve Holt
Francie and David Horvitz
Barbara and Scot Hunter
Ann Marshall and Frederick Ingham
Michele and Stephen Jackman
Ellen and Joe Jacobs
Brenda and John Johnson
Jill and Matt Katz
Lisa Kornstein Kaufman and
Michael Kaufman
Patricia W. and Bruce M. Keir
Stephen Keller* 
Patricia and Paul Kilgallon
Doreen* and Keith Koenig
Mary and Chuck Laetsch
Liz and Kurt Langsenkamp
Robert W. Leider

Ida and Ray Leightman
Susie and Alan B. Levan
Vicki and Alan Levine
Marsha and Alan Levy
Monica and Michael Maroone
Wendy and Stewart Martin
Patricia L. and George M. Meillarec
Cheryl and Christian Miller
Ginny and Tom Miller
Elissa Mogilefsky and Len Weiselberg
Rhoda and Stephen Moss
Ramola Motwani
Patti and W. Scott Parker
Ann L. Payne
Cynthia and Ramon Rodriguez
Gina and Jay Ryan
Barbara and Herbert E. Saks
Rachael and Dave Schmidt
Skip and Frank Scruggs
Maureen and Tom Shea
Casey and Matt Shore
Rose and Stuart Singer
Robbin and Joe Slama
Samantha and Andrew J. Sossin
Julie N. and Raymond C. Southern
Teresa and Adam Spiegel
Lori and Andrew Taubman
The Thies Family
Julie and Aaron Toombs
Susan and Karl Wagner
Lynda and Mark Walter
Diane and Brad Weinbrum
Gaby and Charlie West
Kevin White
Linda and Mark Wilford
Tricia and Jerry Willenborg
Kathleen Woods-Richardson
The Yerves Family

* deceased

 Tocqueville Legacy Circle Member

Two members wish to remain anonymous.

This list represents current
members as of June 30, 2015

2015-2016 UNITED WAY VOLUNTEERS

BOARD OF DIRECTORS

Jon Ferrando, Chair
AutoNation, Inc.

Colin Brown
JM Family Enterprises, Inc.

Andy Cagnetta
Transworld Business Advisors

Kathleen Cannon
United Way of Broward County

Lori Chevy
Bank of America

Brendan Courtney
HealthTrust Workforce
Solutions

Paul Daly
United Way of Florida
Representative

George L. Hanbury II, Ph.D.
Nova Southeastern University

C. Kennnon Hetlage
Memorial Hospital West

Matt Katz
Katz Barron Squitero Faust, P.A.

Lisa Lutoff-Perlo
Celebrity Cruises, Inc.

Stephen Moss
Holland & Knight

Hector Ponte
Wells Fargo

Dan Reynolds
Broward County AFL-CIO

Gary Rosen, Esq. (Treasurer)
Becker & Poliakoff

Robert Runcie
Broward County Public Schools

Matt Shore
Stephen Douglas Associates

Kathleen Woods-Richardson
City of Miramar

GOVERNANCE COMMITTEE

Jon Ferrando, Chair
AutoNation, Inc.

C. Kennnon Hetlage
Memorial Hospital West

Chuck Laetsch
Crowe Horwath, LLP

Timothy C. Leixner
Holland & Knight

Charles B. Morton, Jr.
Community Advocate

Matt Shore
Stephen Douglas Associates

FINANCE COMMITTEE

Chuck Laetsch, Chair
Crowe Horwath, LLP

Karen Bowman
McGladrey

Paul Daly
Community Advocate

Timothy C. Leixner
Holland & Knight

William O'Leary
Northern Trust

Robert Raudebaugh
Fifth Third Bank

Gary Rosen
Becker & Poliakoff

Michael Siegel
Deloitte & Touche

Paul Tanner
UBS

AUDIT COMMITTEE

Matt Katz, Chair
Katz, Barron, Squitero, and
Faust, P.A.

Keith Cobb
Community Advocate

Jorge Gonzalez
JM Family Enterprises, Inc.

John Primeau
Primeau Centennial Bank

Shea Smith
Berkowitz Pollack Brant

Debra Vogel
Wells Fargo

IMPACT COMMITTEES

COMMISSION ON SUBSTANCE ABUSE BOARD OF GOVERNORS

Cynthia Peterson, Chair
Broward County Medical
Association

Tom Albano
Broward County School Board

Catherine Baez Sholl, M.S.
Children's Services Council of
Broward County

Daniel Castellanos, MD
Florida International University
Chris Checke, LMHC, CAP, LLC
Independent Private Practice

David Choate
Community Volunteer

Marsha Currant
Banyan Health

Paul Daly
Community Volunteer

Cassandra Evans, M.S., C.P.M.
17th Judicial Circuit

Anita Fain Taylor
Community Volunteer

Paul Faulk
Broward Addiction Recovery
Center

Monica Figueroa King
Broward Healthy Start
Coalition

David Freedman
Community Leadership
Consulting

Jim Hall
NSU - ARSH

Dr. Joel Kaufman, Ph.D.
Sunspire Health

Mark Ketcham
SunServe

Judge Ginger Lerner-Wren
17th Judicial Circuit

Lynn Lafferty, Pharm. D., N.D.,
MBA, CNC, CNHP
Nova Southeastern University
College of Pharmacy

Don Maines
Broward Sheriff's Office

Jeff Marcus
17th Judicial Circuit

Carlton Mills
Broward Health Medical Center

Rudy Morel
Drug Court

Charles Morton
Community Volunteer

Shawn Oden
Chase

Dr. Rosalind Osgood
Broward County School Board

Ralph Page
Crime Stoppers

Renée Podolsky
Florida Department of Health in
Broward County

Gisele Pollack
Public Defender's Office, Mental
Health

Captain Carmen Puentes-Croye
FL Alcoholic Beverages &
Tobacco

Jose Rada
Broward-Dade Safety Council

Jackie Rosen
Florida Initiative for Suicide
Prevention, Inc.

David Scharf
Broward Sheriff's Office

Sanford Silverman, M.D.
Comprehensive Pain Medicine

Marielle Sologuren
Pierson Grant Public Relations

Rosemarie Stadelman
Community Volunteer

Richard Seely, M.D.
Addiction Education
Consultants

Teri Stockham, M.S.F.S., Ph.D.
Forensic Toxicologist

Captain Dana Swisher
Fort Lauderdale Police
Department

Judge Michele Towbin Singer
17th Judicial Circuit

Dr. Tammy Tucker
Memorial Regional Hospital

Norma Wagner
Broward Behavioral Health
Coalition

Jonathon White
Drug Enforcement
Administration

2015-2016 UNITED WAY VOLUNTEERS

INCOME COMMITTEE

Diane Schlachter, Chair
Publix Super Markets, Inc.

Sharon Cohen
Children's Services Council of
Broward

Michael Elwell
Community Advocate

Renee Law
Broward College

Victor Leibotsky
SunTrust Bank

Susan Pippitt
Broward County Housing
Authority

Dion Smith
Children's Services Council
of Broward

Michael Watson
CareerForce Broward

Pat West
Family Success
Administration

EDUCATION COMMITTEE

Sharon Cohen
Children's Services Council

Lori Canning, PhD.
Broward County Public
Schools

Beam Furr
Broward County
Commissioner

Kerry Ann Royes
Partners In Education, Inc.

Julia Musella
Baby Boomers International

Alan Levy
Broward Workshop

Nan Rich
Broward County
Commissioner

Felicia Brunson
Florida Virtual School

HEALTH COMMITTEE

Mike DeLucca, Chair
Broward Regional Health
Planning Council, Inc.

Lori Kessler
Broward Health

Audrey Millsaps
Community Advocate

Deborah Mulligan, MD FAAP
FACEP
Nova Southeastern University

Renee Podolsky
Florida Department of Health
in Broward County

Kim Saiswick, RN, PhD
Holy Cross Hospital

Steven Marcus, Ed.D
Health Foundation of South
Florida

Nicole Cook, PhD, MPA
Nova Southeastern Univer-
sity, Master of Public Health
Program

Robert Boo
Pride Center at Equality Park of
South Florida

Shira Kastan Goldstein, MBA,
MPA
University of Miami

Melissa Blum
Humana

William Green for Mandy Wells
Broward County

Timothy G. Curtin, MBA, MSW,
CAP
Memorial Healthcare System

PUBLIC POLICY ADVISORY COMMITTEE

Mark Ketcham
SunServe

Tim Elverman
Community Volunteer

Pamela Adams
Fort Lauderdale Development
Corp

Mona Awad
Center for Working Families Pro-
gram Manager

Katherine Barry
H.O.M.E.S.

Ashley Boxer
Memorial Healthcare Systems

Debon Campbell
City of West Park

Paul Daly
Community Volunteer

Bonnye Deese
Broward Alliance for
Neighborhood Development

Jim Hall
Nova Southeastern University

Tim Hogans
FPL

Karen Holmes
Baptist Health South Florida

Robert Holryod
Children's Services Council

Andrea Knowles
Broward Legislative Delegation

Todd Holt
Greater Fort Lauderdale Alliance

Eddy Labrador
Broward County

Alice Levy
League of Women Voters

Charlotte Mather-Taylor
Broward Health

Nicholas Milano
Holland & Knight

Felipe Pinzon
Hispanic Unity

John Pisula
Pisulla Insurance Alliance

Kevin Purvis
Cothrom Risk & Insurance
Services

Gloria Reinhardt
AARP

Ryan Reiter
Kaufman Lynn Construction

Mark Reyes
Urban League of Broward County

Joanne Richter
Broward Regional Health Planning
Council

Ashley Riggs
Jack and Jill Center

Dan Schevis
Community Volunteer

Sandra Veszi Einhorn
Nonprofit Executive Alliance of
Broward

Norma Wagner
Broward Behavioral Health
Coalition

Charles Webster
Broward County Public Schools

Sarah Weitz
Weitz & Schwartz, P.A.

MISSION UNITED ADVISORY COUNCIL

Founding Chairman
Stephen Moss, Holland &
Knight

Sonny Crouse (Chair)
Tutela Solutions

Stephen Ferrante
(Vice Chair)
Group Victory, LLC

Orlando Abreu
Coldwell Banker Residential
Real Estate

Norm Baker
Kaufman Lynn Construction

Carolyn Burns
Coldwell Banker – Las Olas

Jessica Carpio
Broward County Vet Service
Officer

Peter Caspari
Our Community Salutes of
Broward

Todd Clarke
Southeast Toyota
Distributors, LLC

LaVerne Daley
eLLe Global

Tim Farrell
Veterans4You

Ray Ferrero, Jr.
Nova Southeastern
University

Michael Giallombardo
Florida Atlantic University

Amber Goethel
Holland & Knight

Denise Jones
Resolve Maritime Academy

Tony Karrat
Legal Aid Service of
Broward County, Inc.

Roy Krause
Broward Workshop

Kirk Leopard
(Honorary Member)
U.S. Department of
Veterans Affairs

Edward Lohrer
Becker & Poliakoff

Jason Mann
Calvary Chapel Fort
Lauderdale

Susie Marshall
Nova Southeastern
University

Alex Meizoso
Chamberlaine
University - DeVry

Carlos Molinet
Greater Fort Lauderdale Con-
vention and Visitors Bureau

Craig Pollock
Southeast Toyota
Distributors, LLC

Barbara Prager
Coast to Coast Legal Aid of
South Florida

Fred Rogers
The Veterans Trust

Paul Russo
(Honorary Member)
U.S. Department of
Veterans Affairs

Tracy Schuldiner
2-1-1 Broward

Craig Sergott
(Honorary Member)
U.S. Department of
Veterans Affairs

Joel Smith
Right Time Right Thing
Consulting Services

Ben Sorensen
Optimum Associates, LLC

Justin Stuckart
Veterans4You

Stella Tokar
BOLD Consulting

Sherrill Valdes
Department of Veterans
Affairs (Retired)

David van der Most
David van der Most, Inc.

Tim Vermillion
(Honorary Member)
U.S. Department of
Veterans Affairs

AFFINITY GROUPS

WOMEN UNITED STEERING COMMITTEE

Rosy Lopez – Chair
Rosy Strategies

Amy Cooper
MyMotionCalendar

Jacqueline F. Howe, Esq.
Shutts & Bowen

Bridget Christie Jefferies
SunTrust Bank, Inc.

Sasha Moon
JM Family Enterprises, Inc.

Laurie Oestreicher
Community Advocate

Christine Pallesen
Dale Carnegie Training South-
east Florida

Stephanie Petrosky
Nova Southeastern University

Stella Tokar
B.O.L.D. Consulting and
Coaching

Jenny Watson
AutoNation

Gaby West
Broward Health International

Sarah T. Weitz, Esq.
Weitz & Schwartz, P.A.

YOUNG LEADERS COMMITTEE

Latoya Brown-Campbell
UPS

Michael De Biase, Esq.
Tobin & Reyes, P.A.

Geral "Jerry" Donnini
Moffa, Gainor, & Sutton, P.A.

Jordan Gillespie
Cothrom Risk & Insurance
Services

Mark Mariani
Intermedix

Lais Pontes
The Pontes Group

Tiphannie Rood
Kaufman Rossin & Co

Daphnee Sainvil
Broward County

Ashley Shea
AutoNation, Inc.

Mickey Wirtz
Wizard Creations

ENVISION UNITED COMMITTEE

Michael Wild – Chair
Wild Felice & Partners, P.A.

Erika Azani
Florida Luxurious Properties

Erin Clampett
Marsh & McLennan Agency

Sam Eppy
Eppy Financial Group

David Hirschberg
Gladstone & Weissman, P.A.

Marc Infante
Wells Fargo

Anthony Judge
Community Advocate

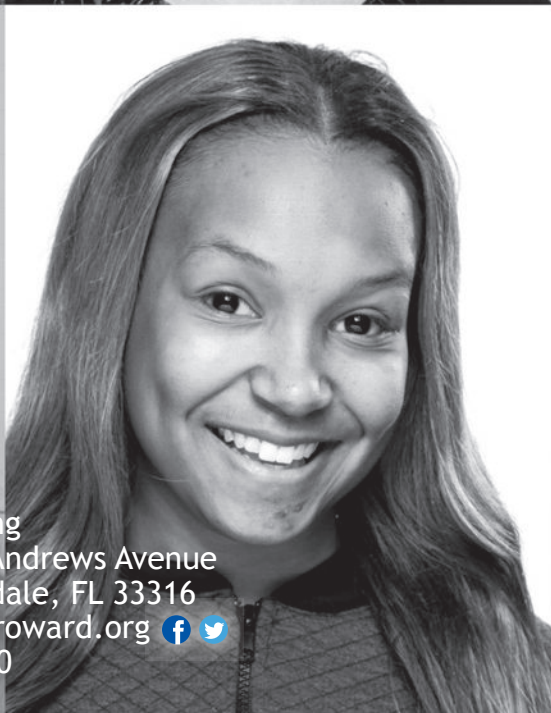
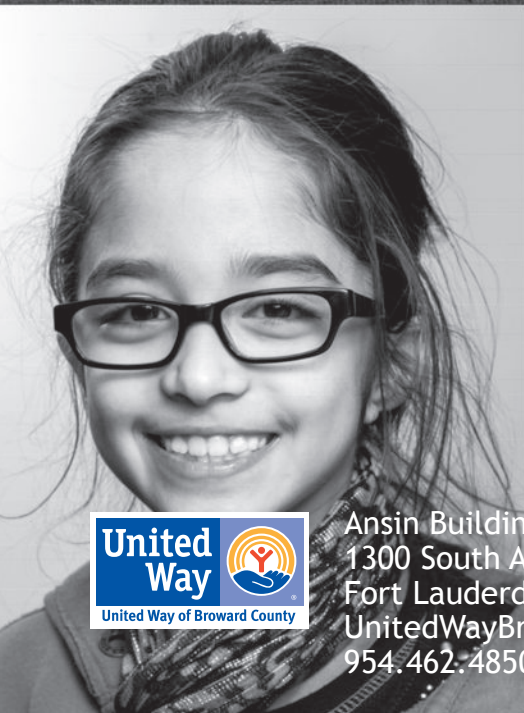
Sean Riley
UBS Financial Services



Mindy Siegel
Community Advocate

Troy Sorel
Emerald Advisors

Jonathan Wolfe
AutoNation, Inc.

*deceased



Ansinn Building
1300 South Andrews Avenue
Fort Lauderdale, FL 33316
UnitedWayBroward.org  
954.462.4850