



# GULFSTREAM COMMUNITY PARTNERSHIP SCHOOL



# Gulfstream Early Learning Center and Gulfstream Academy are two public, non-charter schools established in 2016

## Gulfstream Academy K-8 Students



**1,417** K-8 students

**75%** receive free and reduced lunch

**42%** are identified as English Learners

**16%** have been identified with special learning needs

## Gulfstream Early Learning Center Students (0-5)



**156** pre-K students

**100%** receive free and reduced lunch

**17%** are identified as English Learners

**36%** have been identified with special learning needs



Note: Percentages used in this slide are from Gulfstream's Spring 2022 Needs Assessment Report Findings

# In 2019, 6 partners joined together in establishing a Community Partnership School at Gulfstream Academy



The Community Partnership School (CPS) model **has four model components**. A “Community school” is a term used to **define an approach used to improve the success of students, families and a community** through collaborations between a school and a community partner(s).



Note: The graphic was created by the UCF Center for Community Schools and is taken from their presentation “An Orientation to Planning”



# The core partners represent various organizations— Gulfstream has six core partners



University or  
College



School  
District



Nonprofit



Healthcare  
Provider



# The CPS model is supported by four pillars that contribute to the success and sustainability of the model



Gulfstream Academy, with the support from core partners, **will implement several processes, programs and services on campus aligned to the pillars.**

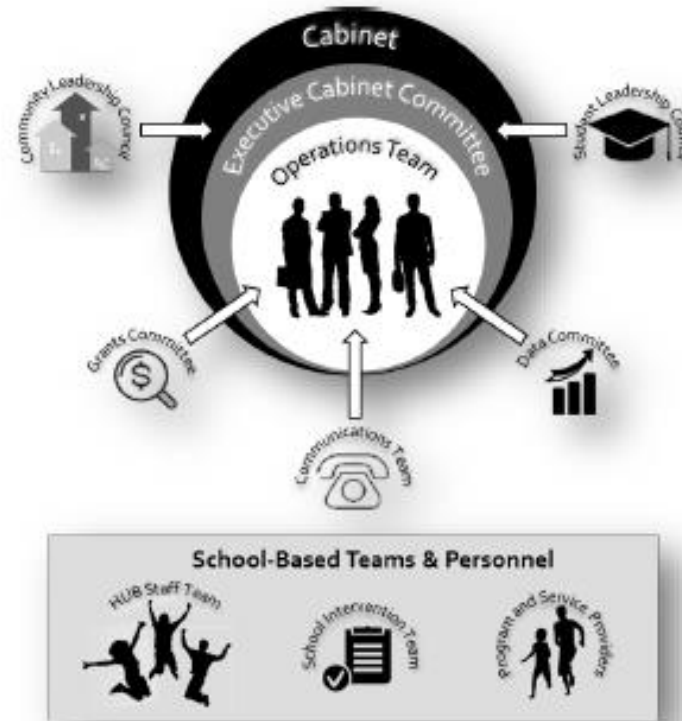


Note: The graphic was created by the UCF Center for Community Schools and is taken from their presentation "An Orientation to Planning"



# Pillar 1: Collaborative Leadership

A culture of **shared governance** and **collective decision-making** toward a unified vision to identify needs and provide resources in the school and community.



Note: The graphic was created by the UCF Center for Community Schools and is taken from their presentation "An Orientation to Planning"



## Pillar 2: Expanded Learning

**Academic support and enrichment** that takes place before and after school, during weekends and summer, to **augment traditional learning during the school day** such as tutoring, mentorship programs, leadership opportunities, etc.



Note: The graphic was created by the UCF Center for Community Schools and is taken from their presentation "An Orientation to Planning"



# Pillar 3: Wellness Supports

Access to a range of **health and social services** that are provided **on the school's campus** such as dental treatment, medical services, vision care, behavioral health counseling and health insurance access.



Note: The graphic was created by the UCF Center for Community Schools and is taken from their presentation "An Orientation to Planning"





# Pillar 4: Family and Community Engagement

**Bringing families and the community into the school** as partners in student's success **AND** making the school a **neighborhood center** that provides adult enrichment opportunities. Examples of services and programs under this pillar are a parent resource center, clothes and food pantry, etc.



Note: The graphic was created by the UCF Center for Community Schools and is taken from their presentation "An Orientation to Planning"



# The goal is for Gulfstream Academy to be certified by UCF as a Community Partnership School by year 5

## ← Implementation Phase →

2019-20	2020-21	2021-22	2022-23	2023-24	2024-25	2025-26
Planning Period	Hybrid Planning	Implementation Year 1	Implementation Year 2	Implementation Year 3	Implementation Year 4	Implementation Year 5
<i>Submit Planning Registration form to join certification track</i>	<i>Begins July 1 after CPS director is hired</i>	<i>Begin implementation</i>	<i>Submit Intent-to-Certify form and schedule certification review</i>	<i>Prepare for and complete <b>Certification Readiness Assessment</b></i>	<i>Continue implementation</i>	<i>Prepare for and complete <b>Certification Assessment</b></i>



**A UCF-CERTIFIED**

**COMMUNITY PARTNERSHIP SCHOOL**

CENTER FOR COMMUNITY SCHOOLS



# To be certified as a community partnership school, Gulfstream Academy has to follow and meet 12 standards

Standard 1 – Partnership

Standard 2 – Collaborative Leadership, Governance and structure

Standard 3 – Foundational Principles

Standard 4 – Staffing

Standard 5 – Integrated Community Partnership School Framework

Standard 6 – Expanded Learning Opportunities

Standard 7 – Comprehensive Learning Supports

Standard 8 – Family and Community Engagement

Standard 9 – Volunteering

Standard 10 – University/College Assistance

Standard 11 – Evaluation

Standard 12 – Sustainability



# There are four governance and operating groups essential to the Community Partnership School (CPS) model

## Standard 2 – Collaborative Leadership, Governance and structure



***A CLC member (representing the voice of the community) and a student or parent from the SLC (representing students' voice) will sit on the cabinet***



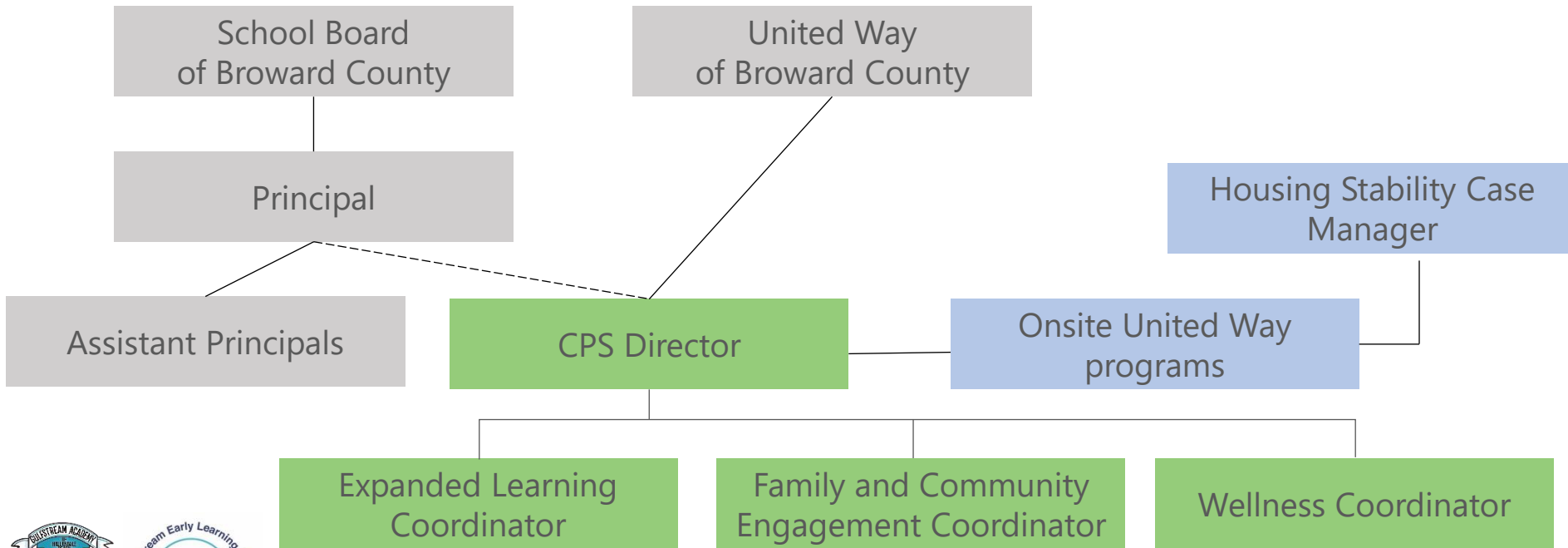
# Aside from the cabinet, there is an operations team that helps to operationalize the model and is aligned to the four pillars



Note: The graphic was created by the UCF Center for Community Schools and is taken from their presentation "An Orientation to Planning"



# The onsite operations team is made up of four core staff positions



# The Community Partnership School model is having a direct impact on 1,400+ students and their families

## A few 2022-2023 Goals

1

Increase onsite wraparound supports from each CPS pillar correlated with decreasing chronic absenteeism (defined as students missing 10% or more of school days).

2

Fulfill community requests for increased health supports (primary care, vision, dental, mental health) for pediatric and adult community members through onsite programming and referrals for health navigation.

3

Complete an interagency data sharing agreement between core partners for effective data-based strategic planning

